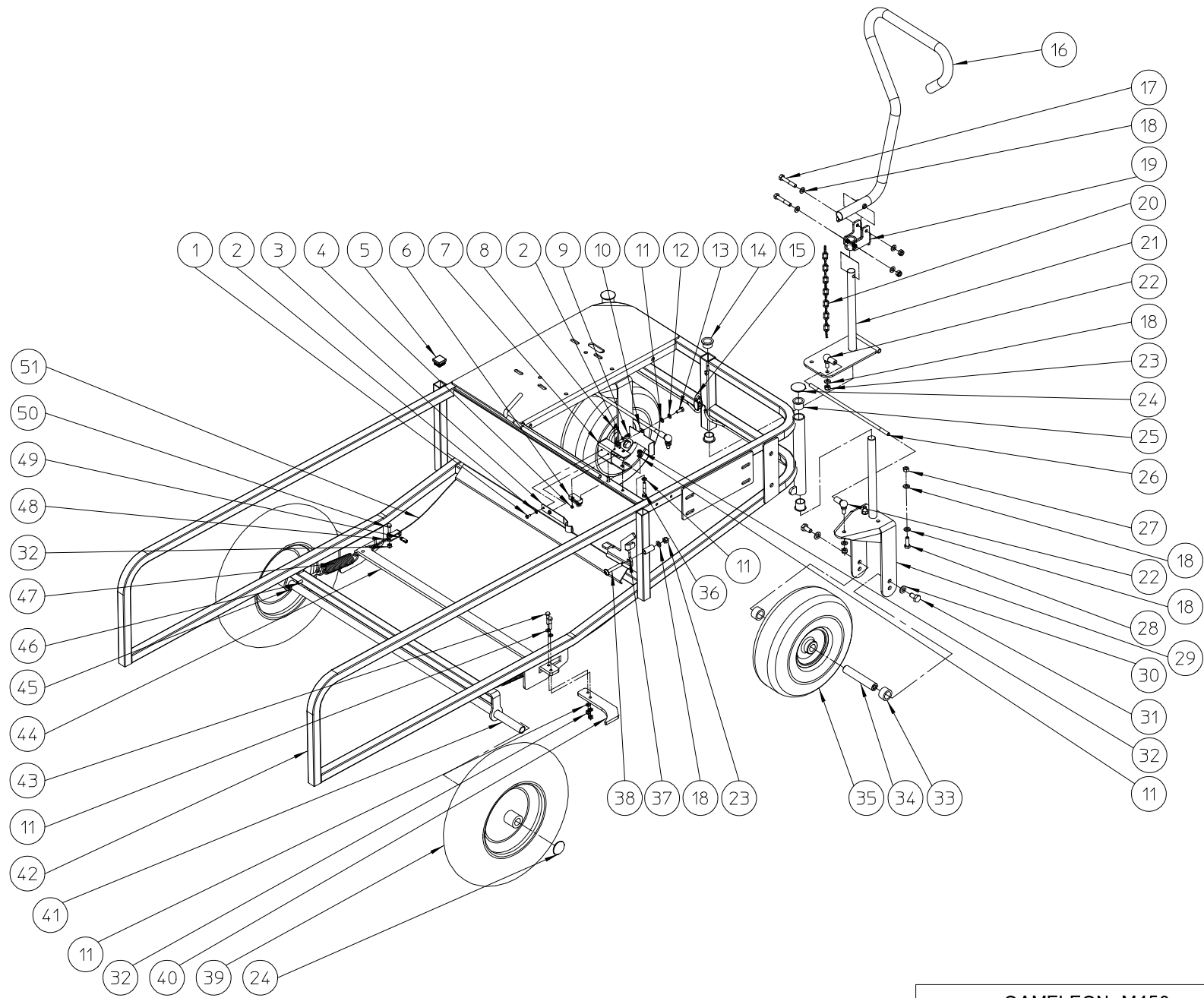


<b>CAMELEON M450 – HOUSING</b>				
NO	<b>MMA 01 340 210</b>	REV	3	DATE

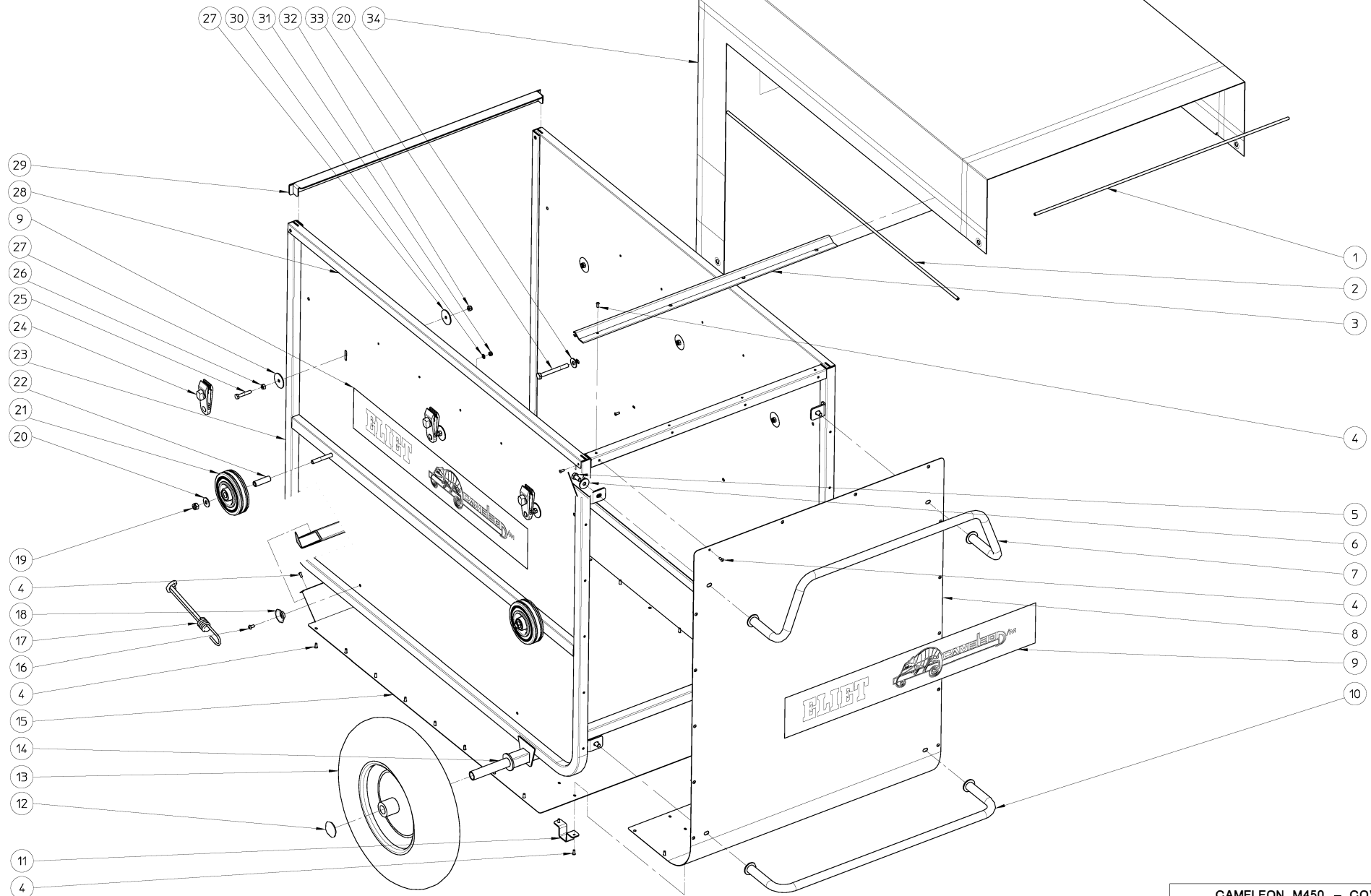
Name	Pos No	Description	Total Qty
MMA 01 340 210	0	MODEL M450	0
MPA 01 340 475	1	BACKPLATE TURBINE	1
BB 120 030 120	2	HEAVY DUTY ROLL PIN 3X12MM DIN1481	4
BB 501 251 600	3	TAPER LOCK TL 2012-1"	1
BB 501 311 220	4	SET SCREW 7/16"X7/8"	2
BR 181 601 500	5	NYLON BUSHING (60/164x15)	2
BB 342 060 668	6	KEY 6.35X6.35X68 DIN 6880	1
BQ 505 010 030	7	STICKER MAX 3200 RPM 90X25	1
BM 202 109 000	8	HONDA GX 270	1
BS 511 000 840	9	BOLT M8X40 DIN 931	4
BS 532 008 223	10	WASHER M8X22X1.5	12
BS 532 008 356	11	WASHER M8X35X3	4
BS 502 000 800	12	SELF LOCKING NUT M8 DIN 985	13
BS 531 000 800	13	WASHER M8 DIN 125	14
BS 512 000 825	14	BOLT M8X25 DIN 933	2
BS 534 000 800	15	LOCK WASHER M8 DIN 6798A	2
BS 511 040 841	16	SCREW 5/16	4
BR 900 001 600	17	RUBBER SILENCER CAM M450	1
MPA 01 340 302	18	PLATE TURBINEHOUSING	1
MPA 01 340 225	19	IMPELLER TURBINE	1
BS 531 000 600	20	WASHER M6 DIN 125	20
BS 533 000 600	21	LOCK WASHER M6 DIN 127B	12
BT 162 501 081	22	SNAP CAP 100X40MM	1
BS 521 100 673	23	UMBRACO SCREW M6X165	12
MPA 01 150 995	24	CLAMPING RING	1
BS 522 500 330	25	SCREW M3X30 ISO 7380	2
MPA 01 150 985	26	CONTACT SUPPORT SUCTION HOSE	1
BV 915 000 060	27	LAMINATED SPRING 1MM	1
BS 502 000 500	28	SELF LOCKING NUT M5 DIN 985	2
BS 502 000 600	29	SELF LOCKING NUT M6 DIN 985	8
BE 120 010 500	30	SAFETY SWITCH	1
BS 531 000 300	31	WASHER M3 DIN 125	4
BS 502 000 300	32	SELF LOCKING NUT M3 DIN 985	4
MPA 01 150 980	33	COVER PLATE CONTACT	1
BS 531 000 500	34	WASHER M5 DIN 125	2
BS 512 000 512	35	BOLT M5X12 DIN 933	2
BS 522 500 825	36	SCREW M8X25 ISO 7380	4
BS 554 100 616	37	BOLT M6X16 DIN 603	4
BS 512 000 820	38	BOLT M8X20 DIN 933	3
MPA 01 340 890	39	PLATE	1
MPA 01 340 500	40	SUPPORTPLATE TURBINE INPUT	1
MPA 01 340 870	41	LOCK	1
BN 230 100 408	42	PLASTIC GRIP 1"	1
MPA 01 340 540	43	INPUT TUBE WITH HOSE END	1
BS 522 500 616	44	SCREW M6X16 ISO 7380	8
MPA 01 340 490	45	FRONTPLATE TURBINE	1
MPA 01 340 465	46	CONNECTIONSHAFT	2
MPA 01 340 320	47	PROTECTIONPLATE	1
BQ 158 000 202	48	INSULATION FOAM	1



**CAMELEON M450 - CHASSIS**

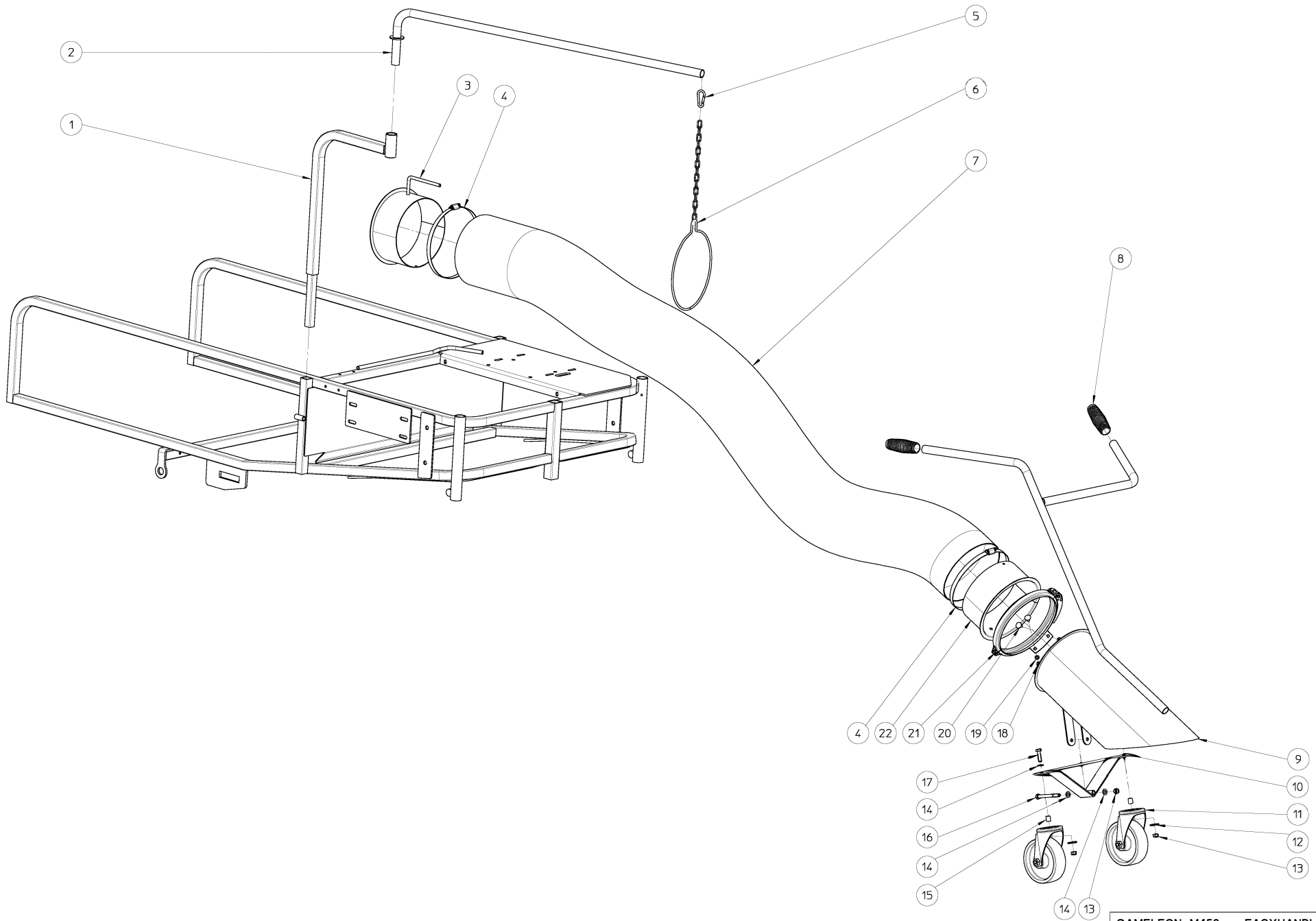
NO	<b>MMA 01 340 230</b>	REV	3	DATE	2020/05/05
----	-----------------------	-----	---	------	------------

Name	Pos No	Description	Total Qty
MMA 01 340 230	0	MACHINE FRONT SIDE	0
BS 541 000 410	1	SCREW M4X10 DIN 84	2
BS 531 000 400	2	WASHER M4 DIN 125	4
BV 920 010 020	3	SPRING	1
BS 502 000 300	4	SELF LOCKING NUT M3 DIN 985	2
BR 021 125 250	5	CAP 25X25	1
BE 120 010 500	6	SAFETY SWITCH	1
MPA 01 340 520	7	PROTECTION CONTACT CONTAINER	1
BS 522 500 320	8	SCREW M3X20 ISO 7380	2
BS 502 000 400	9	SELF LOCKING NUT M4 DIN 985	2
MPA 01 340 530	10	COVER CONTACT	1
BS 531 000 600	11	WASHER M6 DIN 125	13
BS 533 000 600	12	LOCK WASHER M6 DIN 127B	1
BS 512 000 616	13	BOLT M6X16 DIN 933	1
BR 112 201 500	14	NYLON BUSHING WITH COLLAR (20/24/30x15/2)	2
BY 360 050 050	15	MOBILE PULLEY NYLON 5MM	1
MPA 01 340 395	16	CONTROL	1
BS 511 000 842	17	BOLT M8X50 DIN 931	2
BS 531 000 800	18	WASHER M8 DIN 125	17
MPA 01 340 400	19	CONTROLHOLDER	1
BY 512 032 529	20	CHAIN Ø3X13X25MM - 29CM	1
MPA 01 340 406	21	CONTROL MODULE	1
BA 230 010 800	22	BALL JOINT M8	4
BS 502 000 800	23	SELF LOCKING NUT M8 DIN 985	7
BB 011 000 200	24	STARLOCK 20MM	4
BR 112 202 100	25	NYLON BUSHING WITH COLLAR (20/24/29x21/1)	4
BS 581 200 806	26	STUD DING M8X300X30X30	2
BS 501 000 800	27	NUT M8 DIN 934	4
BS 512 000 825	28	BOLT M8X25 DIN 933	4
MPA 01 340 370	29	FORK CASTOR WHEEL	2
BS 531 001 000	30	WASHER M10 DIN 125	4
BS 512 001 020	31	BOLT M10X20 DIN 933	4
BS 502 000 600	32	SELF LOCKING NUT M6 DIN 985	8
MPA 01 340 380	33	SPACER WHEELSHAFT	4
MPA 01 340 375	34	WHEELSHAFT	2
BW 029 020 000	35	WHEEL 4.00-4	2
BS 511 000 640	36	BOLT M6X40 DIN 931	2
MPA 01 340 170	37	CLUTCHING	1
BS 522 600 842	38	SCREW M8X50	1
BW 040 020 000	39	WHEEL 4.80-4	2
MPA 01 340 390	40	BRAKE	2
MPA 01 340 045	41	TUBE WHEELSHAFT	1
MPA 01 340 365	42	FRAME	1
BS 511 000 630	43	BOLT M6X30 DIN 931	4
MPA 01 340 385	44	BRAKERAIL	1
BS 501 000 600	45	NUT M6 DIN 934	4
BS 551 000 646	46	EYE BOLT M6X70 DIN 444	2
BV 919 000 020	47	SPRING	2
BK 170 541 120	48	CLEVIS	2
BK 170 208 000	49	CABLE FASTENER 8X15MM	2
BS 512 000 620	50	BOLT M6X20 DIN 933	2
BK 151 182 500	51	CABLE Ø1.8 L:2500MM	1



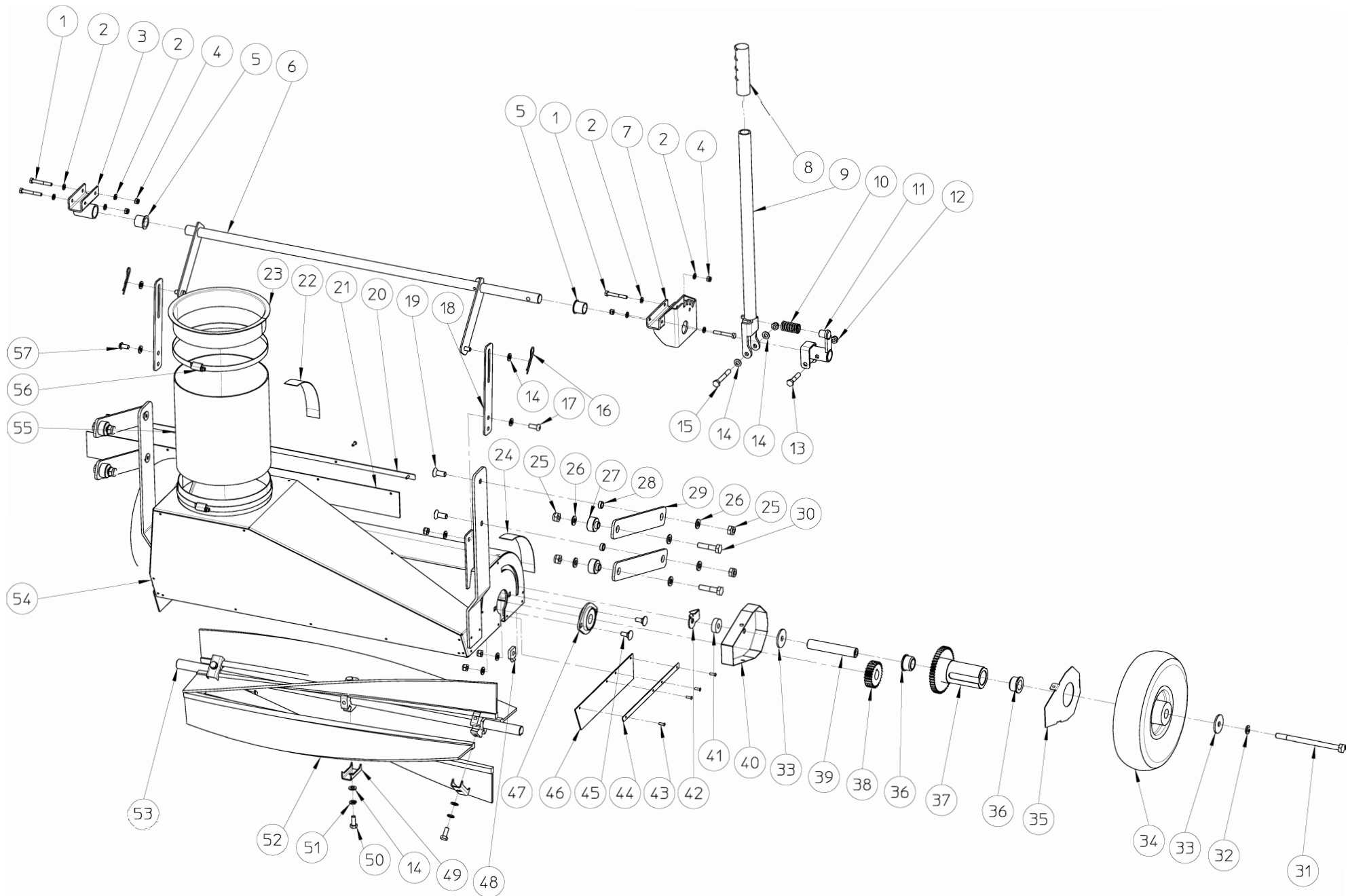
<b>CAMELEON M450 – COVER</b>					
NO	<b>MMA 01 340 240</b>	REV	2	DATE	2020/05/19

Name	Pos No	Description	Total Qty
MMA 01 340 240	0	COLLECTOR	0
MPA 01 340 590	1	AXLE	1
BK 212 060 900	2	CABLE CONDUCTOR 6X900MM	2
MPA 01 340 545	3	ALU PROFILE DEFLECTOR	1
BB 221 104 100	4	POP PLUG ALU 3.9X10 DIN 7337 A	52
BS 512 000 816	5	BOLT M8X16 DIN 933	4
BS 532 008 254	6	WASHER M8X25X2	4
MPA 01 340 140	7	STEERING BRACKET TOP	1
MPA 01 340 430	8	REAR PLATE	1
BQ 501 230 020	9	STICKER CAMELEON MEDIUM 680X110MM	3
MPA 01 340 145	10	STEERING BRACKET UNDER	1
MPA 01 340 130	11	CLAMP STRAP	2
BB 011 000 200	12	STARLOCK 20MM	2
BW 040 020 000	13	WHEEL 4.80-4	2
MPA 01 340 045	14	TUBE WHEELSHAFT	1
MPA 01 340 435	15	UNDER-PALETT	1
BS 522 500 510	16	SCREW M5X10	2
BY 725 010 321	17	ELASTIC 32CM	2
BY 348 290 020	18	HOLDER	2
BS 502 000 800	19	SELF LOCKING NUT M8 DIN 985	4
BS 532 008 223	20	WASHER M8X22X1.5	8
BW 110 012 000	21	WHEEL 100/30	4
MPA 01 340 450	22	SHAFT ROLLER	4
MPA 01 340 425	23	CHASSIS CONTAINER	1
BY 724 100 250	24	FIXATING PINCHE	6
BS 511 000 635	25	BOLT M6X35 DIN 931	6
BS 501 000 600	26	NUT M6 DIN 934	6
BS 532 006 353	27	RING M6*35*1,5	12
MPA 01 340 440	28	SIDEPLATE	2
MPA 01 340 460	29	SUPPORT FRONT	1
BS 531 000 500	30	WASHER M5 DIN 125	2
BS 502 000 500	31	SELF LOCKING NUT M5 DIN 985	2
BS 502 000 600	32	SELF LOCKING NUT M6 DIN 985	6
BS 511 000 847	33	BOLT M8X70 DIN 931	4
BY 723 010 050	34	COLLECTOR BAG	1



<b>CAMELEON M450 - EASYHANDLE</b>				
NO	MMA 01 340 250	REV	3	DATE 2020/05/18

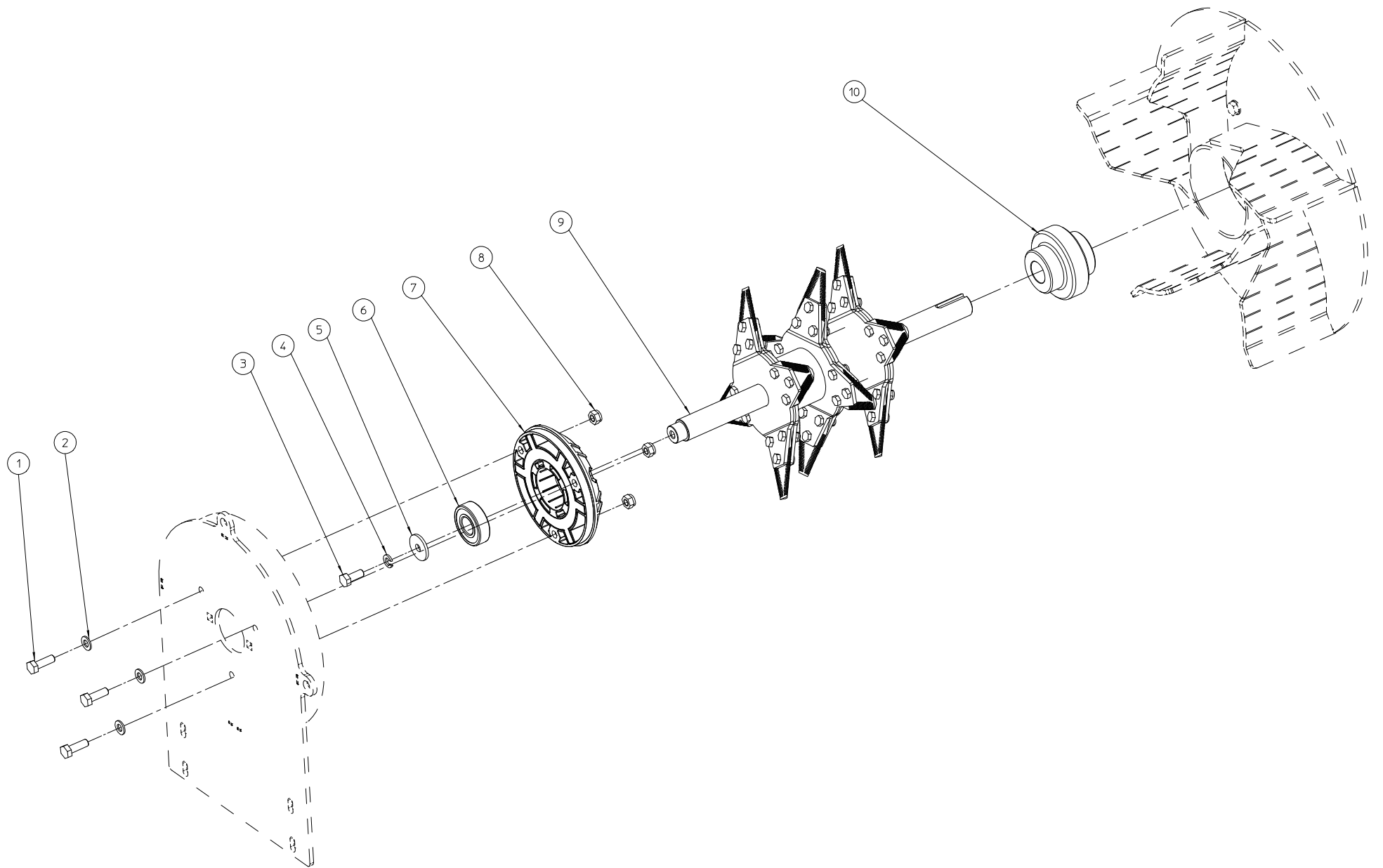
Name	Pos No	Description	Total Qty
MMA 01 340 250	0	SUCTION HOSE ASSEMBLY	0
MPA 01 340 455	1	HOLDER SWINGARM	1
MPA 01 340 075	2	SWINGARM	1
MPA 01 151 000	3	CONNECTOR	1
BT 670 217 200	4	HOSE CLAMP 175X200MM	2
BY 522 051 200	5	SNAP HOOK 5X50	1
MPA 01 340 175	6	SUPPORTRING + CHAIN SUCTION HOSE	1
BR 220 420 020	7	FLEXIBLE SUCTION PIPE Ø20x200CM	1
BN 230 100 400	8	RUBBER GRIP	2
MPA 01 340 080	9	SUCTIONMOUTH WITH HANDLEBARS	1
MPA 01 340 215	10	SUPPORT CASTOR WHEELS	1
BW 411 455 480	11	CASTER WHEEL 125/38	2
BS 532 008 254	12	WASHER M8X25X2	2
BS 502 000 800	13	SELF LOCKING NUT M8 DIN 985	3
BS 531 000 800	14	WASHER M8 DIN 125	4
MPA 01 340 880	15	CENTER PIECE	2
BS 511 000 848	16	BOLT M8X80 DIN 931	1
BS 512 000 830	17	BOLT M8X30 DIN 933	2
BS 502 000 600	18	SELF LOCKING NUT M6 DIN 985	2
BS 531 000 600	19	WASHER M6 DIN 125	2
BS 554 100 616	20	BOLT M6X16 DIN 603	2
MPA 01 150 435	21	QUICK STRAINER	1
MPA 01 150 400	22	FIXATION SUCTION PIPE	1



<b>M</b>		<b>CAMELEON M450 –OPTIONS</b>			
NO	<b>MMA 01 340 290</b>	REV	2	DATE	2020/05/15

Name	Pos No	Description	Total Qty
MMA 01 340 290	0	OPTIONS	0
BS 511 000 641	1	BOLT M6X45 DIN 931	4
BS 531 000 600	2	WASHER M6 DIN 125	8
MPA 01 340 660	3	AXLE	1
BS 502 000 600	4	SELF LOCKING NUT M6 DIN 985	4
BR 112 202 100	5	NYLON BUSHING WITH COLLAR (20/24/29x21/1)	2
MPA 01 340 650	6	LIFTING ARM	1
MPA 01 340 670	7	LEFT SIDE	1
BN 230 100 408	8	PLASTIC GRIP 1"	1
MPA 01 340 600	9	HEIGHT BLOCKING	1
BV 916 000 010	10	SPRING 20X2,5X37	1
MPA 01 340 640	11	SUPPORT SPRING	1
BS 502 000 800	12	SELF LOCKING NUT M8 DIN 985	8
BS 511 000 840	13	BOLT M8X40 DIN 931	1
BS 531 000 800	14	WASHER M8 DIN 125	17
BS 511 000 844	15	BOLT M8X60 DIN 931	1
BB 040 102 040	16	HAIRPIN COTTER 2MM DIN 11024	2
BS 522 500 820	17	SCREW M8X20 ISO 7380	1
MPA 01 340 740	18	HEIGHT ARM	2
BS 522 101 025	19	SCREW M8X60 DIN 7991	4
MPA 01 340 730	20	SUPPORT RUBBER	1
MDT 01 340 891	21	BRUSH BACK SIDE	1
BQ 501 230 030	22	STICKER HEIGHT - RIGHT SIDE	1
MPA 01 340 680	23	SCREW	1
BQ 501 230 040	24	STICKER HEIGHT - LEFT SIDE	1
BS 502 001 000	25	SELF LOCKING NUT M10 DIN 985	8
BS 531 001 000	26	WASHER M10 DIN 125	12
MPA 01 340 790	27	CENTREPIECE	4
MPA 01 340 780	28	CENTREPIECE	4
MPA 01 340 750	29	PLATE SUPPORT	4
BS 511 001 041	30	BOLT M10X45 DIN 931	4
BS 511 001 055	31	BOLT M10X150 DIN 931	2
BS 533 001 000	32	LOCK WASHER M10 DIN 127B	2
BS 532 010 406	33	WASHER M10X40X3	4
BW 025 020 010	34	WHEEL COMPLETE 3.00-4	2
MPA 01 340 710	35	HOLDER	2
BR 112 201 910	36	NYLON BUSHING WITH COLLAR (20.5/30/35x19/2.5)	4
MPA 01 340 810	37	ASSEMBLY	2
BA 602 002 604	38	CENTREPIECE	2
MPA 01 340 770	39	AXLE WHEELS	2
MPA 01 340 700	40	COVER	2
MPA 01 340 800	41	CENTREPIECE	2
MPA 01 340 630	42	ASSEMBLY	2
BB 221 004 120	43	POP PLUG STEEL 3.9X12	13

MPA 01 340 720	44	PLATE SUPPORT RUBBER	2
BS 554 100 820	45	BOLT M8X20 DIN 603	4
BL 801 102 000	47	BEARING + FLANGES CSPFL 204	2
MPA 01 340 760	48	SUPPORT BOLT	2
MPA 01 340 850	49	SUPPORT BRUSH	6
BS 512 000 820	50	BOLT M8X20 DIN 933	6
BS 533 000 800	51	LOCK WASHER M8 DIN 127B	6
BG 741 900 030	52	BRUSH	4
MPA 01 340 860	53	AXLE SUPPORT	1
MPA 01 340 620	54	CHASSIS BRUSH	1
BR 220 420 002	55	FLEXIBLE 230MM	1
BT 670 217 200	56	HOSE CLAMP 175X200MM	2
BS 522 500 816	57	SCREW M8X16 ISO 7380	1



Pos	Qté	Nom	Description
1	3	BS 512 000 825	DIN 933 VIS M8X25
2	3	BS 531 000 800	DIN 125 RONDELLE M8
3	1	BS 512 000 820	DIN 933 VIS M8X20
4	1	BS 533 000 800	DIN 127 RONDELLE GROER M8
5	1	BS 532 008 306	RONDELLE DE CARROSSERIE M8X30X3
6	1	BL 002 004 703	DIN 625 ROULNTN 6204 2RZ
7	1	BR 692 047 290	ASSEMBLAGE-SILENT-BLOC-ROTOR
8	3	BS 502 000 800	DIN 985 ECROU NYLON M8
9	1	MPA 01 340 830	ROTOR CAMELEON
10	1	BA 280 756 100	ACCOUPLMENT ELASTIQUE CHAINE